

Faculty and Staff,

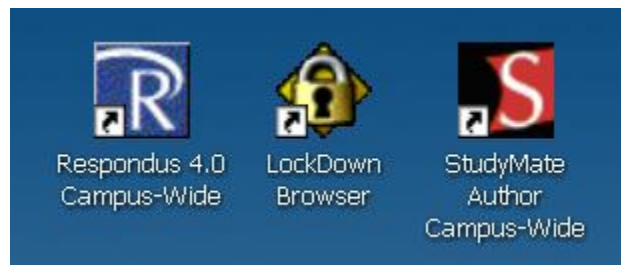
Blackboard will be **unavailable Saturday, May 25<sup>th</sup> 7:00 pm through Sunday, May 26<sup>th</sup> 2013 9:00 am.**  
During this time Blackboard will be upgraded to Blackboard Learn SP 10/11.

#### **For list of Supported Browsers and Applications recommended for Blackboard SP 10/11**

- [Supported Browsers](#) for Blackboard Learn SP 10/11

#### **Other Applications**

**If you use the following applications you will need the versions listed below. If you do not have these versions, contact your DIS representative to install. You will need to update to these versions around the time of the Blackboard upgrade to use with the new version of Blackboard. Latest installation versions are available on the eLearning page <http://elearningdocs.umc.edu>**



- Respondus 4.0 Campus-wide Version 4.0.5.04 November 27,2012** or later
- StudyMate 2.5 Campus-wide Version 2.5.1.02 December 12, 2012** or later
- Respondus Lock Down Browser**
  - Windows **Version 1.0.5.08 March 7, 2013** or later
  - Mac OS X: **Version 1.0.5.07 March 7, 2013** or later

-Students can install the latest version of Respondus Lockdown Browser by going to <http://www.respondus.com/lockdown/information.pl?ID=355116900>.

-Computer lab managers will need to install the Lab version also available from the same link or from the link listed on the eLearning page <http://eLearningdocs.umc.edu>

#### **New Features and Guide**

- For a summary of some of the new features
- New [Blackboard Guide for SP 10/11](#)

## How to check which version of Respondus and StudyMate

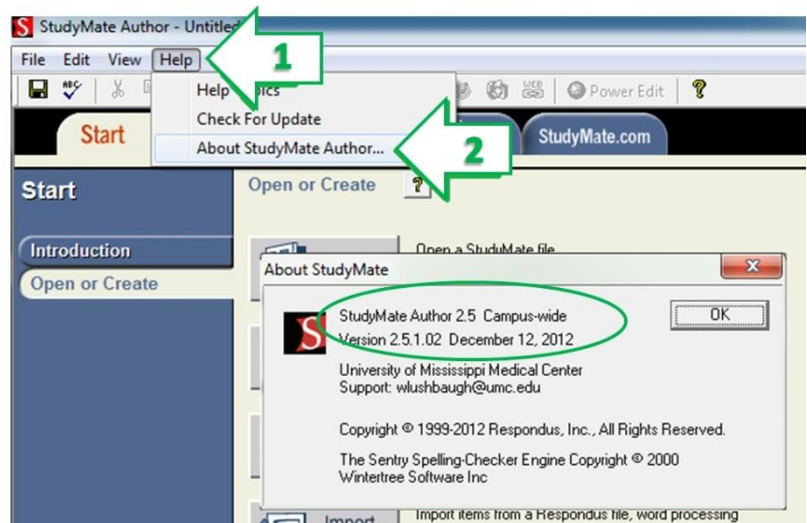
### Respondus

1. Start Respondus application
2. Click 'Help' in top menu to expand menu
3. Click 'About StudyMate Author...'




### StudyMate Author

1. Start StudyMate Author application
2. Click 'Help' in top menu to expand menu
3. Click 'About StudyMate Author...'



### Respondus Lockdown Browser

1. Start Respondus Lockdown Browser
2. Click the  in the top menu
3. Respondus LockDown Browser information will display.  
Note minor, interim patches require manually downloading and running the full install again.